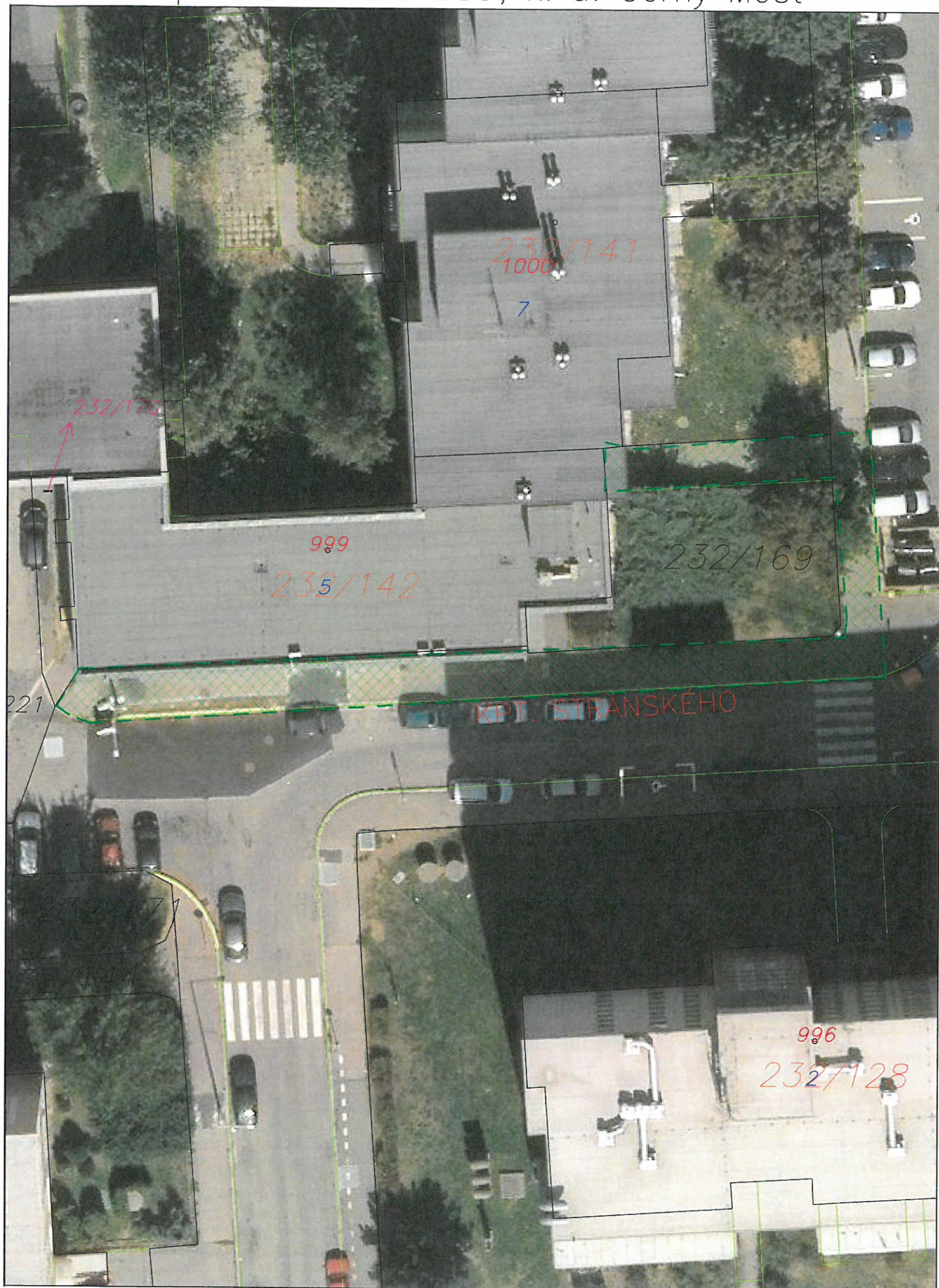


**Úklid chodníků a travnatých ploch objektů MČ Praha 14**

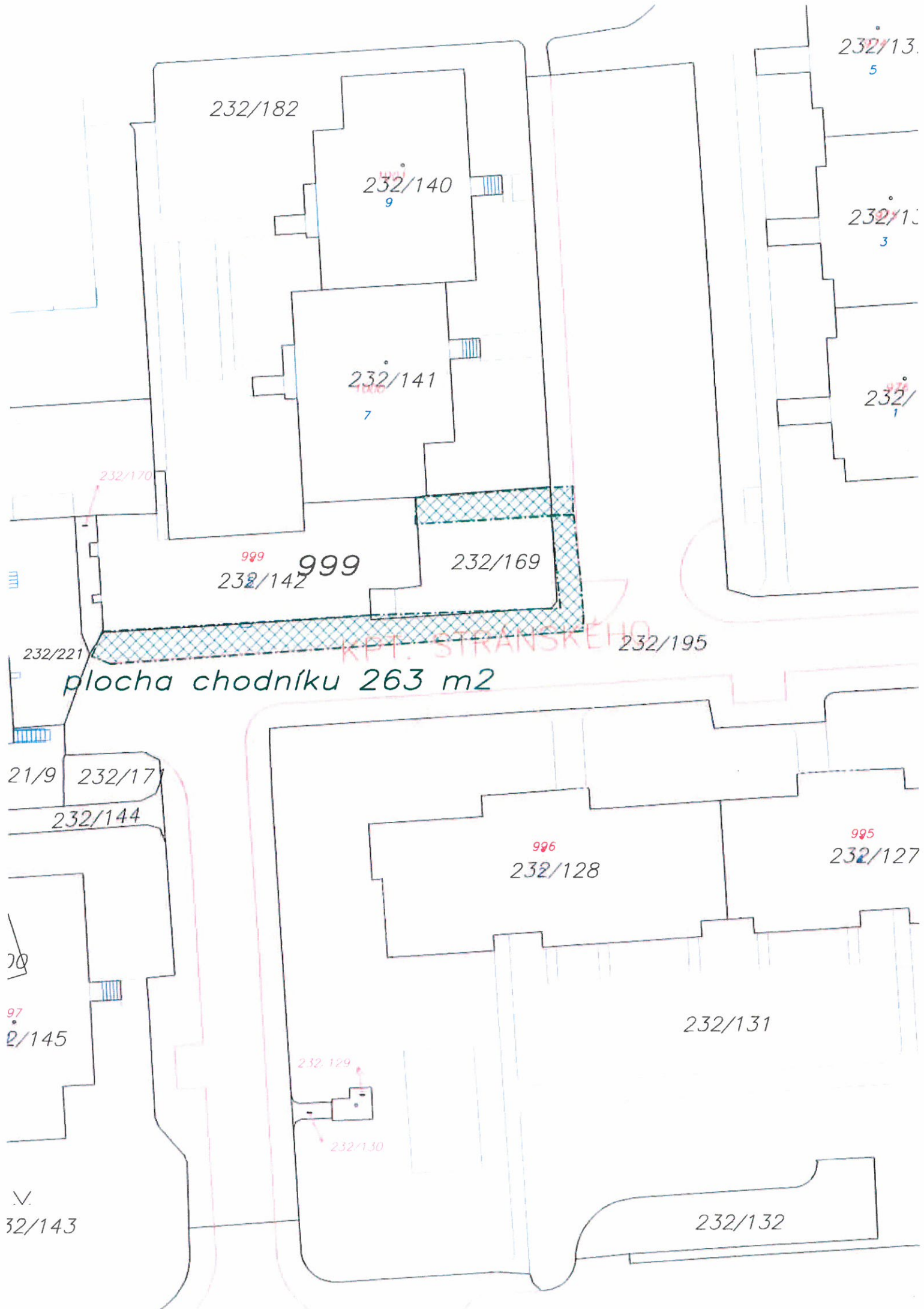
Chodníky	12 745 m <sup>2</sup>	značeno zeleně
Trávník	21 145 m <sup>2</sup>	značeno červeně
Podloubí	505 m <sup>2</sup>	značeno černými křížky
Komunikace	2 215 m <sup>2</sup>	



Kpt. Stránského 999, k. ú. Černý Most













13

18/1  
radla

92

V.  
141/5  
1072  
55

plocha trávniku 610 m<sup>2</sup>  
plocha chodníku 320 m<sup>2</sup>

1071  
1071  
85

1068  
102

1069  
101

136

1070  
1070  
86

V.  
141/3

1067  
10

VICKOVA

1066  
98  
10

139

93/1

141/1

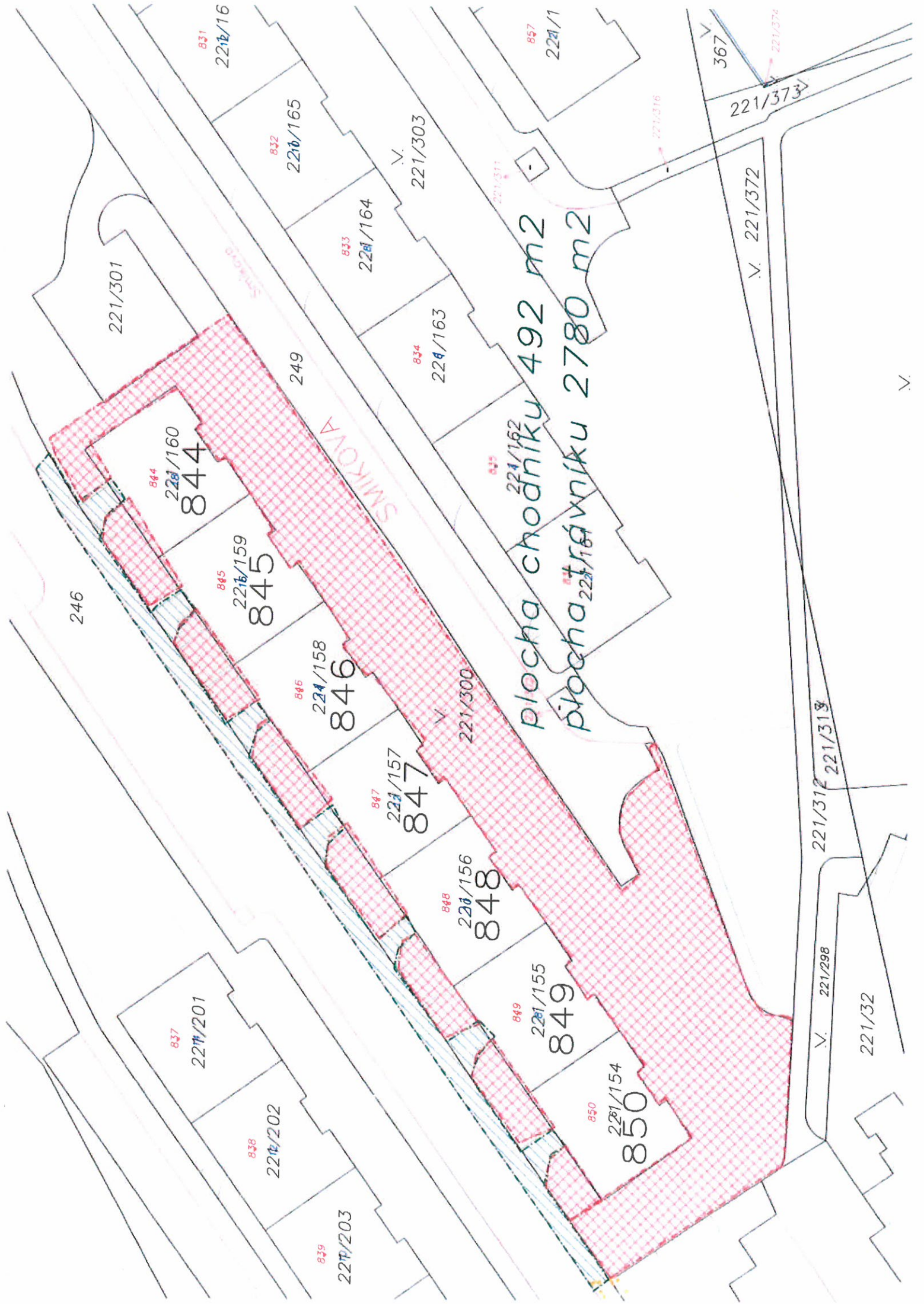
BATEJENCLIKU



Gen. Janouška 844 – 850, k. ú. Černý Most







221/301

221/16

221/165

221/164

221/303

221/1

367

221/373

V. 221/372

221/312 221/313

V. 221/298

221/32

246

844  
221/160

845  
221/159

846  
221/158

847  
221/157

848  
221/156

849  
221/155

850  
221/154

plocha chodníku 492 m<sup>2</sup>  
plocha trávníku 2780 m<sup>2</sup>

SMIKOVÁ

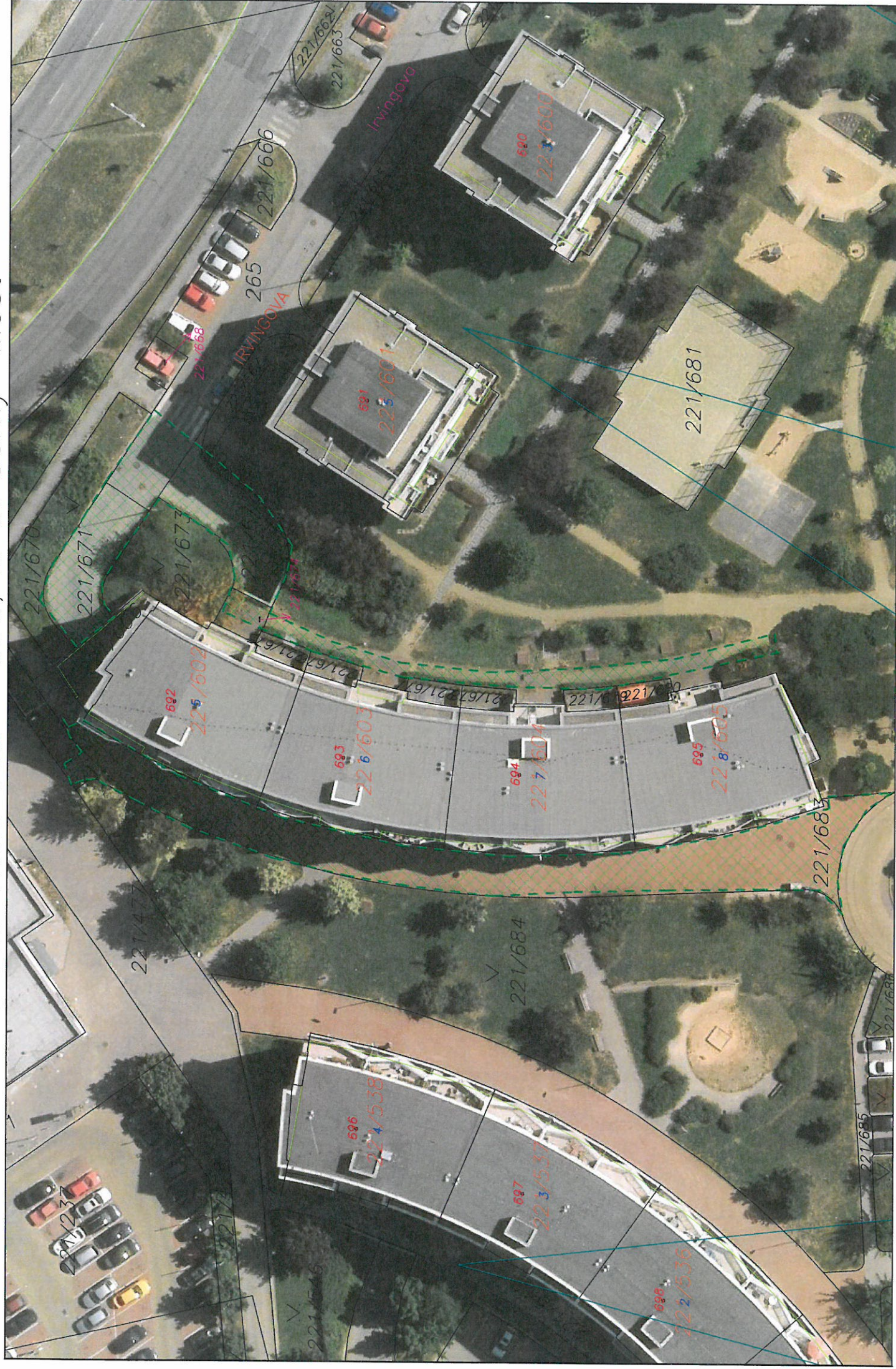




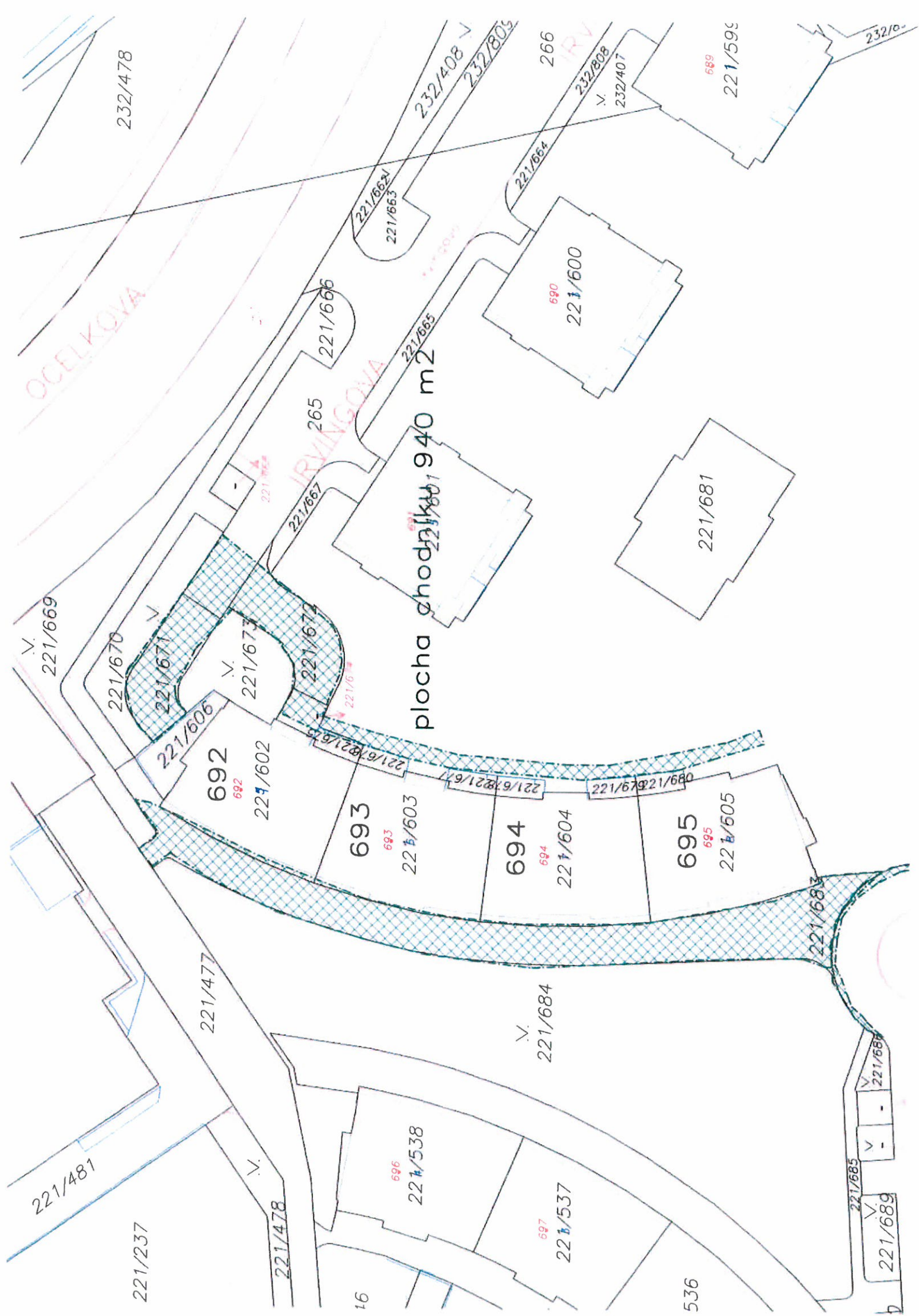














Ronešova č. p. 1133 – 1135, k. ú. Černý Most



1:500



ULIČNÍKOVÁ

0/1

plocha chodníku 614 m<sup>2</sup>  
plocha trávníku 1440 m<sup>2</sup>

5/1

1135

1135  
45

V.  
5/19

1134  
46

1134

V.  
5/18

1133

47

1133

V.  
164

219

V.  
165

169

V.  
170A

1137

12

V.  
163

162

V.  
174

1136

31

84/2

1136  
24

RODINNÁ

V.  
5/16

1131

26

1125

1

V.  
5/13

5/3

V.  
5/14

5/5

V.  
5/1

ULIČNÍKOVÁ



The image is an aerial photograph of a residential area in Bratislava, Slovakia, with various plots and addresses overlaid. The street shown is DYGRÝNOVA. The plots are numbered as follows:

- 221/685 (top left)
- 221/686 (top left)
- 221/687 (top left)
- 221/688 (top left)
- 221/689 (top left)
- 221/690 (top left)
- 221/691 (top left)
- 221/692 (top left)
- 221/693 (top left)
- 221/694 (top left)
- 221/695 (top left)
- 221/696 (top left)
- 221/697 (top left)
- 221/698 (top left)
- 221/699 (top left)
- 221/700 (top left)
- 221/701 (top left)
- 221/702 (top left)
- 221/703 (top left)
- 221/704 (top left)
- 221/705 (top left)
- 221/706 (top left)
- 221/707 (top left)
- 221/708 (top left)
- 221/709 (top left)
- 221/710 (top left)
- 221/711 (top left)
- 221/712 (top left)
- 221/713 (top left)
- 221/714 (top left)
- 221/715 (top left)
- 221/716 (top left)
- 221/717 (top left)
- 221/718 (top left)
- 221/719 (top left)
- 221/720 (top left)
- 221/721 (top left)
- 221/722 (top left)
- 221/723 (top left)
- 221/724 (top left)
- 221/725 (top left)
- 221/726 (top left)
- 221/727 (top left)
- 221/728 (top left)
- 221/729 (top left)
- 221/730 (top left)
- 221/731 (top left)
- 221/732 (top left)
- 221/733 (top left)
- 221/734 (top left)
- 221/735 (top left)
- 221/736 (top left)
- 221/737 (top left)
- 221/738 (top left)
- 221/739 (top left)
- 221/740 (top left)
- 221/741 (top left)
- 221/742 (top left)
- 221/743 (top left)
- 221/744 (top left)
- 221/745 (top left)
- 221/746 (top left)
- 221/747 (top left)
- 221/748 (top left)
- 221/749 (top left)
- 221/750 (top left)
- 221/751 (top left)
- 221/752 (top left)
- 221/753 (top left)
- 221/754 (top left)
- 221/755 (top left)
- 221/756 (top left)
- 221/757 (top left)
- 221/758 (top left)
- 221/759 (top left)
- 221/760 (top left)
- 221/761 (top left)
- 221/762 (top left)
- 221/763 (top left)
- 221/764 (top left)
- 221/765 (top left)
- 221/766 (top left)
- 221/767 (top left)
- 221/768 (top left)
- 221/769 (top left)
- 221/770 (top left)
- 221/771 (top left)
- 221/772 (top left)
- 221/773 (top left)
- 221/774 (top left)
- 221/775 (top left)
- 221/776 (top left)
- 221/777 (top left)
- 221/778 (top left)
- 221/779 (top left)
- 221/780 (top left)
- 221/781 (top left)
- 221/782 (top left)
- 221/783 (top left)
- 221/784 (top left)
- 221/785 (top left)
- 221/786 (top left)
- 221/787 (top left)
- 221/788 (top left)
- 221/789 (top left)
- 221/790 (top left)
- 221/791 (top left)
- 221/792 (top left)
- 221/793 (top left)
- 221/794 (top left)
- 221/795 (top left)
- 221/796 (top left)
- 221/797 (top left)
- 221/798 (top left)
- 221/799 (top left)
- 221/800 (top left)
- 221/801 (top left)
- 221/802 (top left)
- 221/803 (top left)
- 221/804 (top left)
- 221/805 (top left)
- 221/806 (top left)
- 221/807 (top left)
- 221/808 (top left)
- 221/809 (top left)
- 221/810 (top left)
- 221/811 (top left)
- 221/812 (top left)
- 221/813 (top left)
- 221/814 (top left)
- 221/815 (top left)
- 221/816 (top left)
- 221/817 (top left)
- 221/818 (top left)
- 221/819 (top left)
- 221/820 (top left)
- 221/821 (top left)
- 221/822 (top left)
- 221/823 (top left)
- 221/824 (top left)
- 221/825 (top left)
- 221/826 (top left)
- 221/827 (top left)
- 221/828 (top left)
- 221/829 (top left)
- 221/830 (top left)
- 221/831 (top left)
- 221/832 (top left)
- 221/833 (top left)
- 221/834 (top left)
- 221/835 (top left)
- 221/836 (top left)
- 221/837 (top left)
- 221/838 (top left)
- 221/839 (top left)
- 221/840 (top left)
- 221/841 (top left)
- 221/842 (top left)
- 221/843 (top left)
- 221/844 (top left)
- 221/845 (top left)
- 221/846 (top left)
- 221/847 (top left)
- 221/848 (top left)
- 221/849 (top left)
- 221/850 (top left)
- 221/851 (top left)
- 221/852 (top left)
- 221/853 (top left)
- 221/854 (top left)
- 221/855 (top left)
- 221/856 (top left)
- 221/857 (top left)
- 221/858 (top left)
- 221/859 (top left)
- 221/860 (top left)
- 221/861 (top left)
- 221/862 (top left)
- 221/863 (top left)
- 221/864 (top left)
- 221/865 (top left)
- 221/866 (top left)
- 221/867 (top left)
- 221/868 (top left)
- 221/869 (top left)
- 221/870 (top left)
- 221/871 (top left)
- 221/872 (top left)
- 221/873 (top left)
- 221/874 (top left)
- 221/875 (top left)
- 221/876 (top left)
- 221/877 (top left)
- 221/878 (top left)
- 221/879 (top left)
- 221/880 (top left)
- 221/881 (top left)
- 221/882 (top left)
- 221/883 (top left)
- 221/884 (top left)
- 221/885 (top left)
- 221/886 (top left)
- 221/887 (top left)
- 221/888 (top left)
- 221/889 (top left)
- 221/890 (top left)
- 221/891 (top left)
- 221/892 (top left)
- 221/893 (top left)
- 221/894 (top left)
- 221/895 (top left)
- 221/896 (top left)
- 221/897 (top left)
- 221/898 (top left)
- 221/899 (top left)
- 221/900 (top left)
- 221/901 (top left)
- 221/902 (top left)
- 221/903 (top left)
- 221/904 (top left)
- 221/905 (top left)
- 221/906 (top left)
- 221/907 (top left)
- 221/908 (top left)
- 221/909 (top left)
- 221/910 (top left)
- 221/911 (top left)
- 221/912 (top left)
- 221/913 (top left)
- 221/914 (top left)
- 221/915 (top left)
- 221/916 (top left)
- 221/917 (top left)
- 221/918 (top left)
- 221/919 (top left)
- 221/920 (top left)
- 221/921 (top left)
- 221/922 (top left)
- 221/923 (top left)
- 221/924 (top left)
- 221/925 (top left)
- 221/926 (top left)
- 221/927 (top left)
- 221/928 (top left)
- 221/929 (top left)
- 221/930 (top left)
- 221/931 (top left)
- 221/932 (top left)
- 221/933 (top left)



699

39

V. 221/69

221/69b

221/689

2271585

V	-	221/68
V	-	

221/6834

268

plocha chodníku 1020 m<sup>2</sup>  
 plocha trávniku 870 m<sup>2</sup>  
 plocha podchodu 120 m<sup>2</sup>

221694

V 221/692

18

686  
2214596  
686

685  
221595  
685

684  
223/594  
684

V.  
221/88

221/6.

221/467

V.  
221/403 ZP 1/696

227/695

684

229/594

500

400

889

223/598

221/698

221/697

SYGRÝNOVA

BYGRÝNOVA  
Bygrýnova

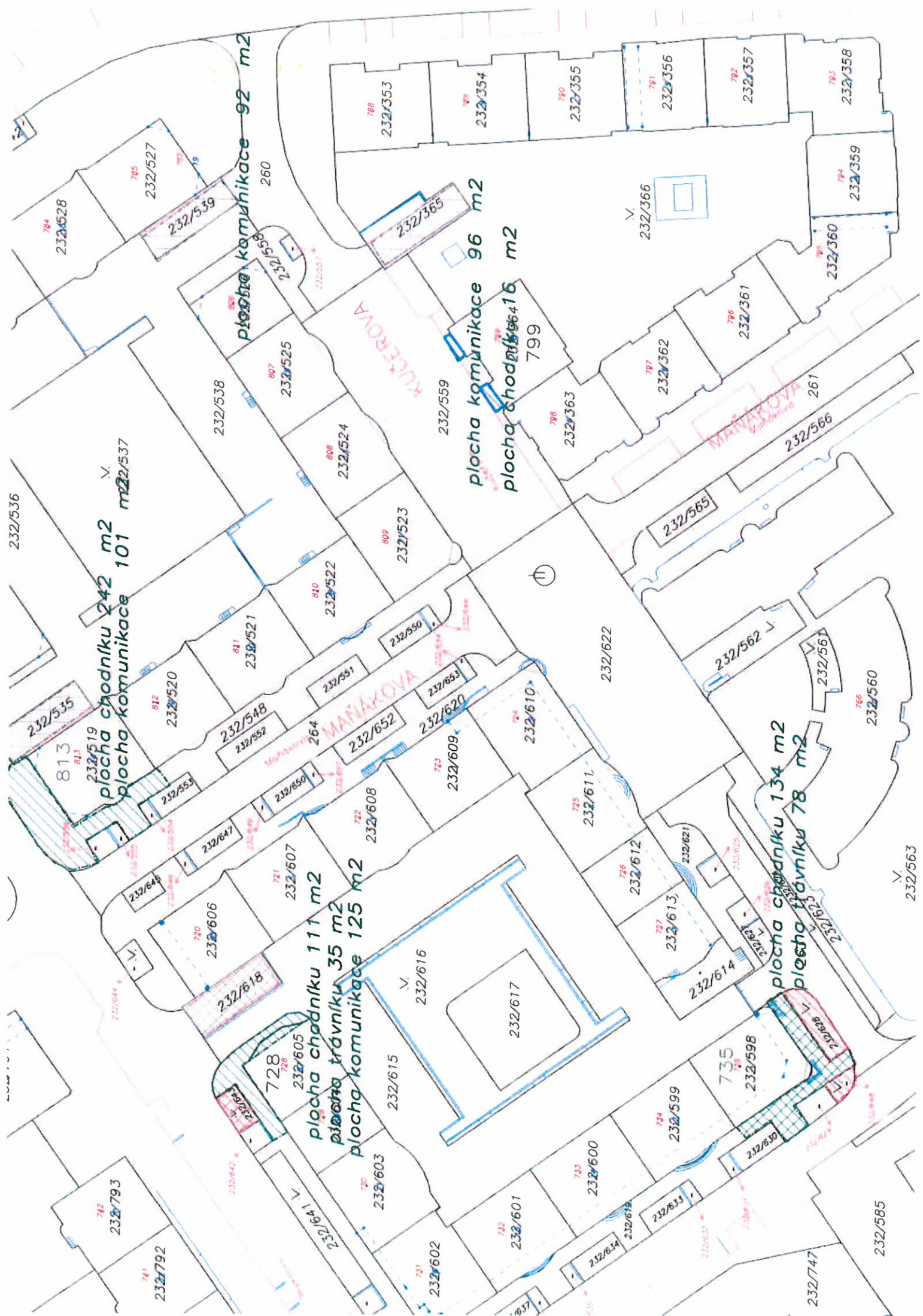
Bygrýnova



Bryksova, Maňákova, Kučerova, k. ú. Černý Most







232/536

232/793

232/792

232/519  
plocha chodníku 242 m2  
plocha komunikace 101 m2

232/539  
plocha komunikace 92 m2

232/365  
plocha komunikace 96 m2  
plocha chodníku 111 m2

232/605  
plocha chodníku 111 m2  
plocha trávníku 35 m2  
plocha komunikace 125 m2

232/625  
plocha chodníku 134 m2  
plocha trávníku 78 m2

KUTEROVA

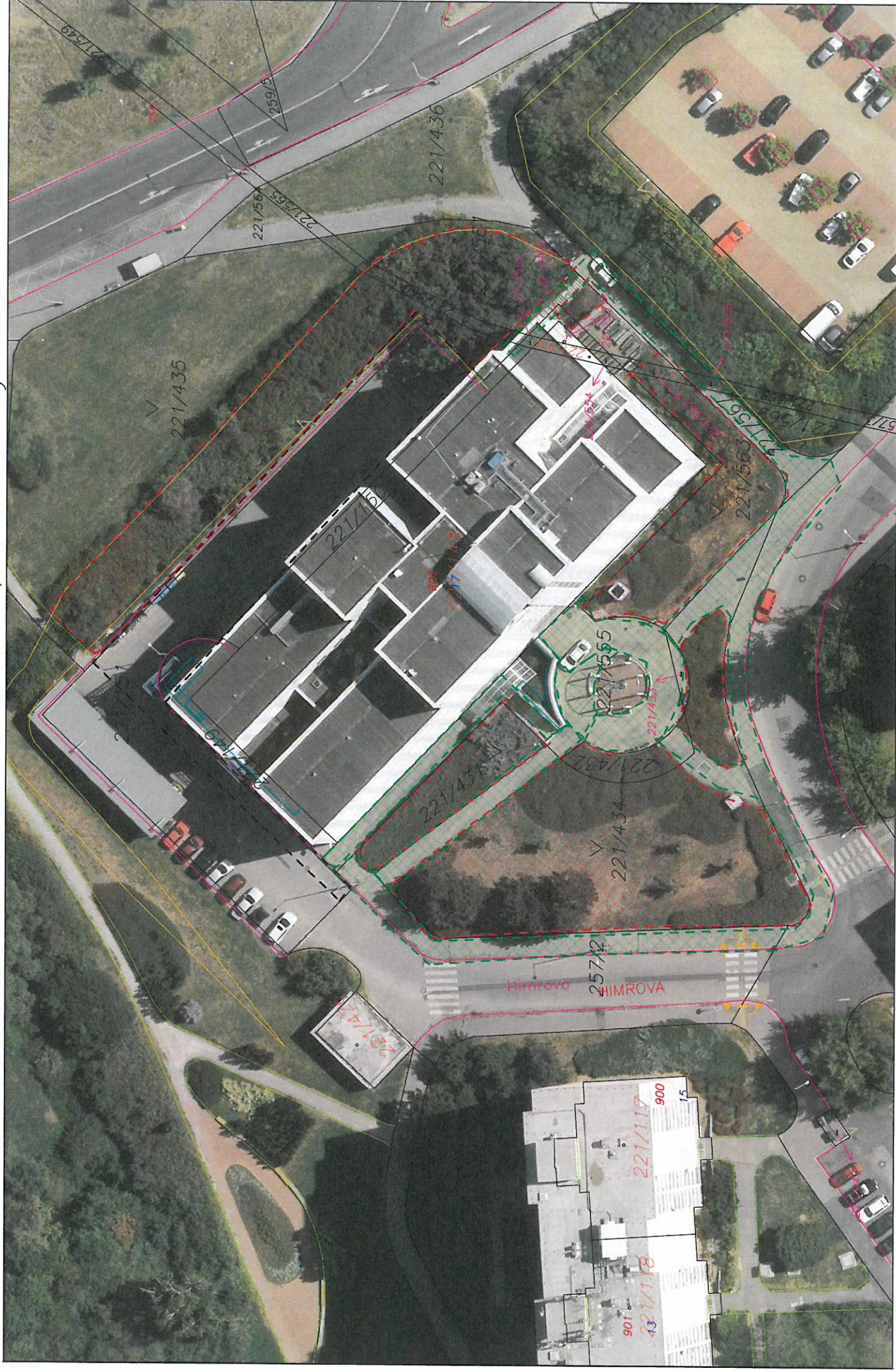
MANAKOVA

232/563

232/585

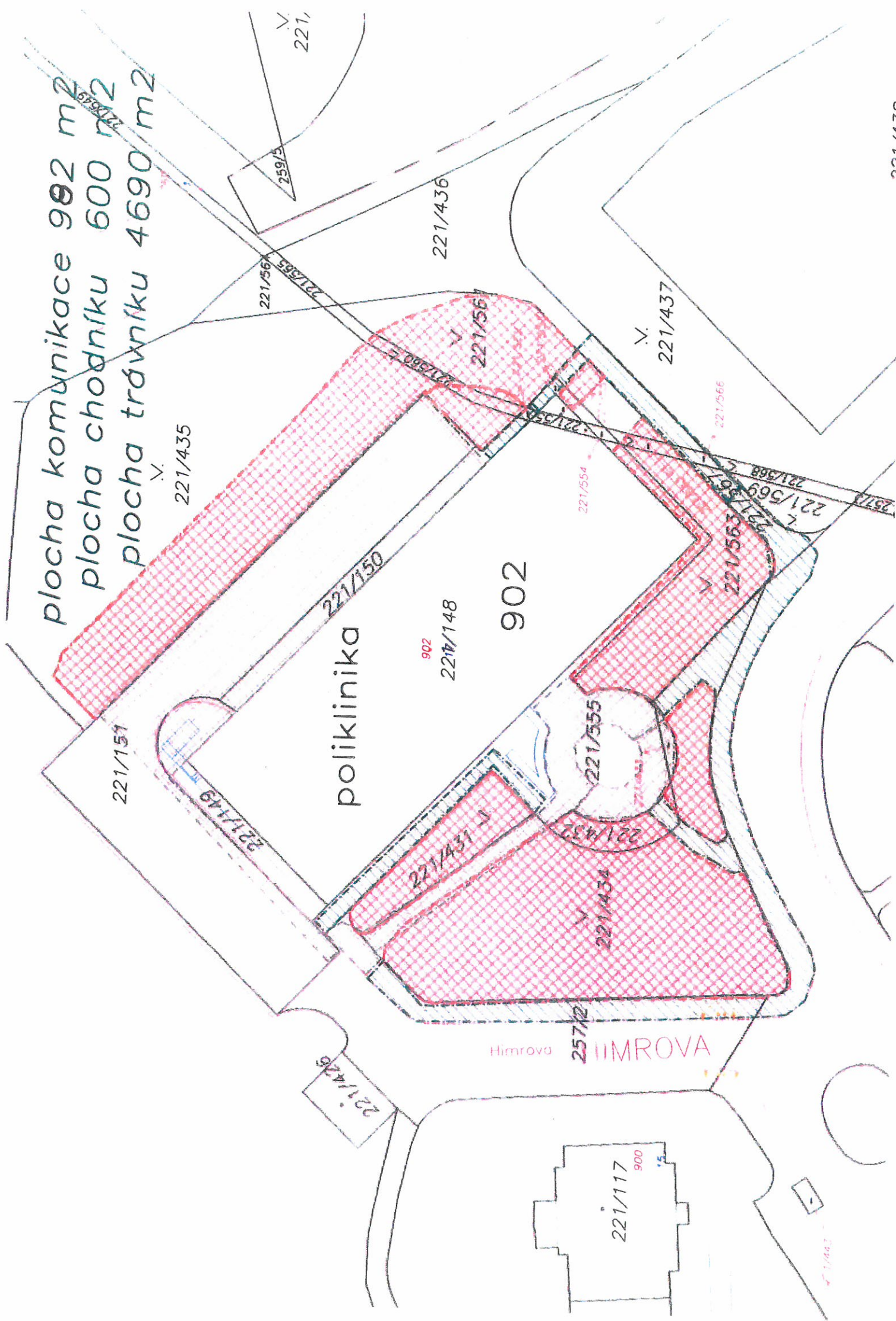
232/747







plocha komunikace 992 m<sup>2</sup>  
plocha chodníku 600 m<sup>2</sup>  
plocha trávníku 4690 m<sup>2</sup>





Bobkova 754 – 755, k. ú. Černý Most





202/411

232/718

232/745

232/715

232/716

232/708

232/707

232/719

plocha komunikace 265m<sup>2</sup>  
plocha chodníků 175 m<sup>2</sup>  
plocha trávníku 75 m<sup>2</sup>  
plocha podloubí 85 m<sup>2</sup>

232/702

232/703

232/705

232/736

232/740

232/796

232/797

232/798

232/799

232/800

232/801

232/802

232/803

232/804

232/805

232/806

232/807

232/808

232/809

232/810

232/811

232/812

232/813

232/814

232/815

232/816

232/817

232/818

232/819

232/820

232/821

232/822

232/823

232/824

232/825

232/826

232/827

232/828

232/829

232/830

232/831

232/832

232/833

232/834

232/835

232/836

232/837

232/838

232/839

232/840

232/841

232/842

232/843

232/844

232/845

232/846

232/847

232/848

232/849

232/850

232/851

232/852

232/853

232/854

232/855

232/856

232/857

232/858

232/859

232/860

232/861

232/862

232/863

232/864

232/865

232/866

232/867

232/868

232/869

232/870

232/871

232/872

232/873

232/874

232/875

232/876

232/877

232/878

232/879

232/880

232/881

232/882

232/883

232/884

232/885

232/886

232/887

232/888

232/889

232/890

232/891

232/892

232/893

232/894

232/895

232/896

232/897

232/898

232/899

232/900

232/901

232/902

232/903

232/904

232/905

232/906

232/907

232/908

232/909

232/910

232/911

232/912

232/913

232/914

232/915

232/916

232/917

232/918

232/919

232/920

232/921

232/922

232/923

232/924

232/925

232/926

232/927

232/928

232/929

232/930

232/931

232/932

232/933

232/934

232/935

232/936

232/937

232/938

232/939

232/940

232/941

232/942

232/943

232/944

232/945

232/946

232/947

232/948

232/949

232/950

232/951

232/952

232/953

232/954

232/955

232/956

232/957

232/958

232/959

232/960

232/961

232/962

232/963

232/964

232/965

232/966

232/967

232/968

232/969

232/970

232/971

232/972

232/973

232/974

232/975

232/976

232/977

232/978

232/979

232/980

232/981

232/982

232/983

232/984

232/985

232/986

232/987

232/988

232/989

232/990

232/991

232/992

232/993

232/994

232/995

232/996

232/997

232/998

232/999

232/1000

232/1001

232/1002

232/1003

232/1004

232/1005

232/1006

232/1007

232/1008

232/1009

232/1010

232/1011

232/1012

232/1013

232/1014

232/1015

232/1016

232/1017

232/1018

232/1019

232/1020

232/1021

232/1022

232/1023

232/1024

232/1025

232/1026

232/1027

232/1028

232/1029

232/1030

232/1031

232/1032

232/1033

232/1034

232/1035

232/1036

232/1037

232/1038

232/1039

232/1040

232/1041

232/1042

232/1043

232/1044

232/1045

232/1046

232/1047

232/1048

232/1049

232/1050

232/1051

232/1052

232/1053

232/1054

232/1055

232/1056

232/1057

232/1058

232/1059

232/1060

232/1061

232/1062

232/1063

232/1064

232/1065

232/1066

232/1067

232/1068

232/1069

232/1070

232/1071

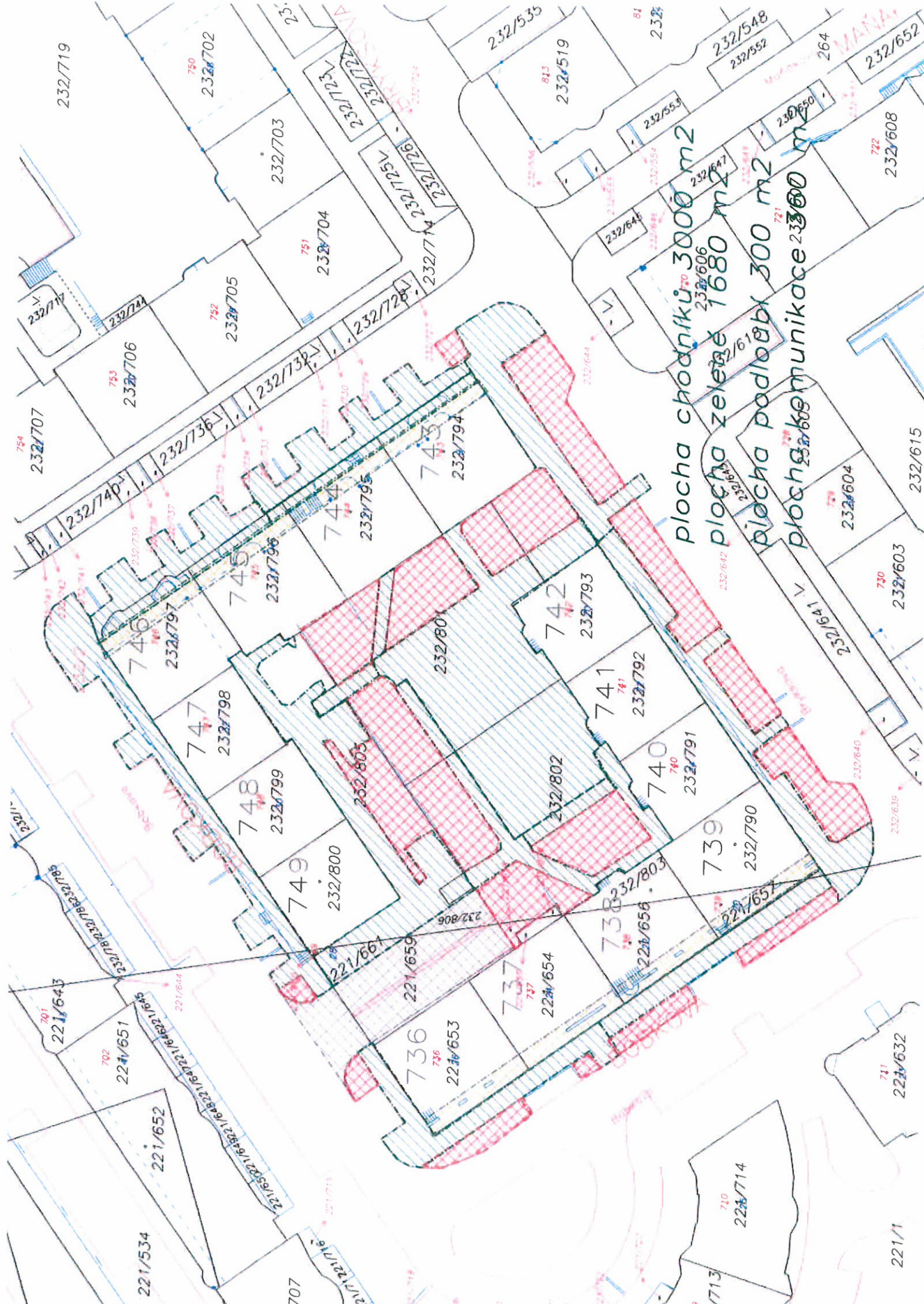
232/1072

232/1073



[illegible]





plocha chodníku 3000 m<sup>2</sup>

plocha zeleně 1680 m<sup>2</sup>

plocha podlaží 300 m<sup>2</sup>

plocha komunikace 2300 m<sup>2</sup>



1:400

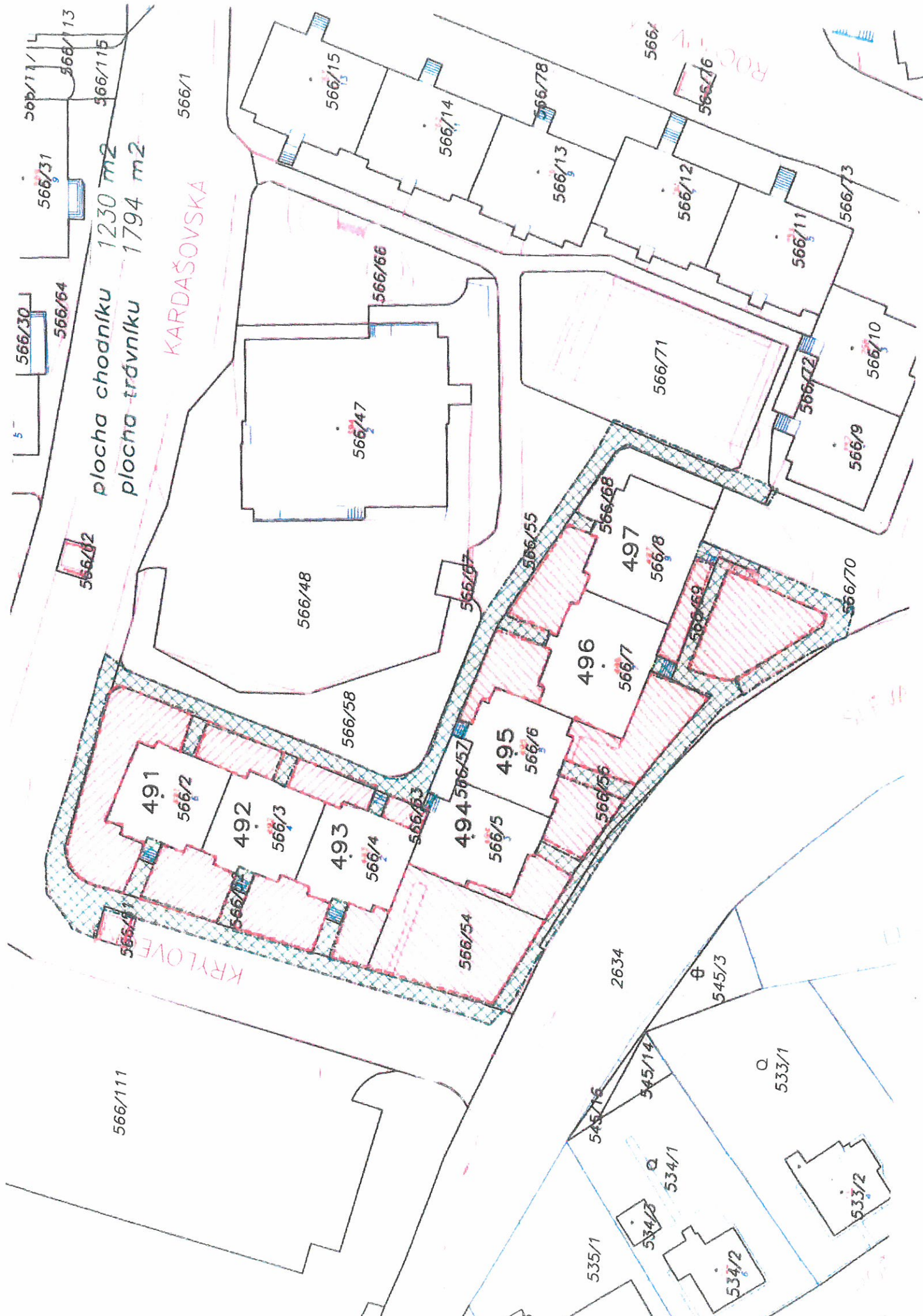


2



1:700





plocha chodníku 1230 m<sup>2</sup>  
plocha trávniku 1794 m<sup>2</sup>

KARDAŠOVSKA

KRYLOVE

566/111

566/1

566/48

566/58

566/47

566/66

566/67

566/57

566/5

566/54

566/56

566/55

566/53

566/52

566/51

566/6

566/7

566/8

566/9

566/10

566/11

566/12

566/13

566/55

566/56

566/57

566/58

566/59

566/60

566/61

566/62

566/63

566/64

566/65

566/66

566/67

566/68

566/69

566/70

566/71

566/72

566/73

566/74

566/75

566/76

566/77

566/78

566/79

566/80

566/81

566/82

566/83

566/84

566/85

566/86

566/87

566/88

566/89

566/90

566/91

566/92

566/93

566/94

566/95

566/96

566/97

566/98

566/99

566/100

566/101

566/102

566/103

566/104

566/105

566/106

566/107

566/108

566/109

566/110

566/111

566/112

566/113

566/114

566/115

566/116

566/117

566/118

566/119

566/120

566/121

566/122

566/123

566/124

566/125

566/126

566/127

566/128

566/129

566/130

566/131

566/132

566/133

566/134

566/135

566/136

566/137

566/138

566/139

566/140

566/141

566/142

566/143

566/144

566/145

566/146

566/147

566/148

566/149

566/150

566/151

566/152

566/153

566/154

566/155

566/156

566/157

566/158

566/159

566/160

566/161

566/162

566/163

566/164

566/165

566/166

566/167

566/168

566/169

566/170

566/171

566/172

566/173

566/174

566/175

566/176

566/177

566/178

566/179

566/180

566/181

566/182

566/183

566/184

566/185

566/186

566/187

566/188

566/189

566/190

566/191

566/192

566/193

566/194

566/195

566/196

566/197

566/198

566/199

566/200

566/201

566/202

566/203

566/204

566/205

566/206

566/207

566/208

566/209

566/210

566/211

566/212

566/213

566/214

566/215

566/216

566/217

566/218

566/219

566/220

566/221

566/222

566/223

566/224

566/225

566/226

566/227

566/228

566/229

566/230

566/231

566/232

566/233

566/234

566/235

566/236

566/237

566/238

566/239

566/240

566/241

566/242

566/243

566/244

566/245

566/246

566/247

566/248

566/249

566/250

566/251

566/252

566/253

566/254

566/255

566/256

566/257

566/258

566/259

566/260

566/261

566/262

566/263

566/264

566/265

566/266

566/267

566/268

566/269

566/270

566/271

566/272

566/273

566/274

566/275

566/276

566/277

566/278

566/279

566/280

566/281

566/282

566/283

566/284

566/285

566/286

566/287

566/288

566/289

566/290

566/291

566/292

566/293

566/294

566/295

566/296

566/297

566/298

566/299

566/300

566/301

566/302

566/303

566/304

566/305

566/306

566/307

566/308

566/309

566/310

566/311

566/312

566/313

566/314

566/315

566/316

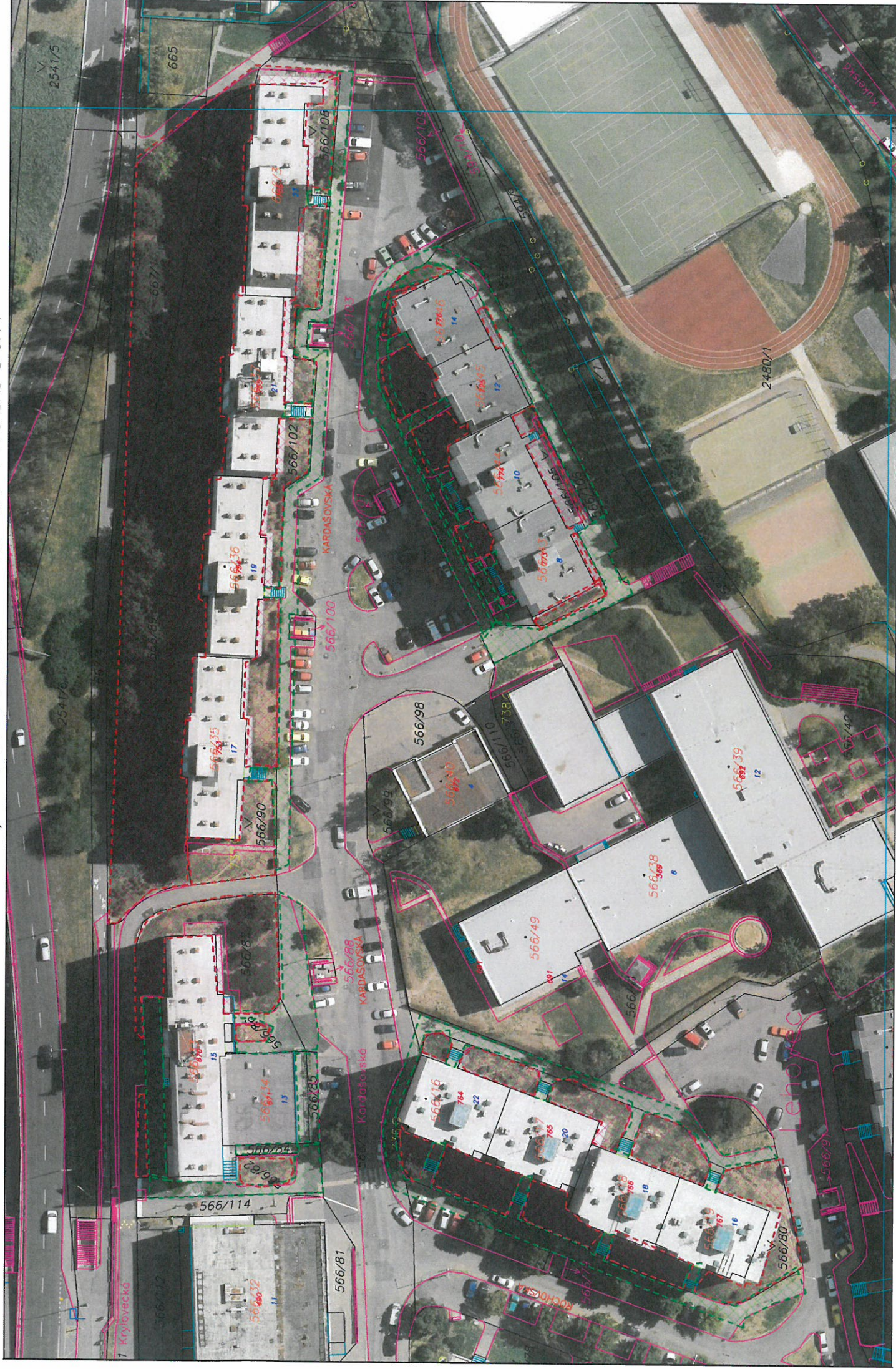
566/317

566/318

566/319</



# Kardašovská, Rochovská – k. ú. Hloubětín





CHINA

PODĚBĚADSKÝ

2541/32

2541/5

2541/6

~~plocha trávniku 3950 m<sup>2</sup>~~  
~~plocha chodníku 515 m<sup>2</sup>~~

5574A

chodníku 612 m<sup>2</sup>  
plocha trávniku 517 m<sup>2</sup>

670

53

754

755

756

565/1

5KA

KARDAŠOVSKA

KARDAS

KA

plocha chodníku 676 m<sup>2</sup>  
566/98  
plocha travníku 509 m<sup>2</sup>

•

plôcha trávniku 1020 m<sup>2</sup>  
plôcha chodníku 570 m<sup>2</sup>

2480/1

5667  
ROCKOVSKA  
5/6

CHALOUPEKACH

This is a detailed cadastral map of a residential area in Prague 6. The map shows building footprints, lot numbers, and street names. Key features include:

- Streets:** ROCHOVA, KARDAŠOVSKA, PODEBRADSKA.
- Buildings and Lots:** Numerous buildings are labeled with lot numbers, including 566/1, 566/13, 566/14, 566/15, 566/17, 566/18, 566/19, 566/21, 566/22, 566/23, 566/24, 566/25, 566/26, 566/27, 566/28, 566/29, 566/30, 566/31, 566/32, 566/33, 566/34, 566/35, 566/36, 566/37, 566/38, 566/39, 566/40, 566/41, 566/42, 566/43, 566/44, 566/45, 566/46, 566/47, 566/48, 566/49, 566/50, 566/51, 566/52, 566/53, 566/54, 566/55, 566/56, 566/57, 566/58, 566/59, 566/60, 566/61, 566/62, 566/63, 566/64, 566/65, 566/66, 566/67, 566/68, 566/69, 566/70, 566/71, 566/72, 566/73, 566/74, 566/75, 566/76, 566/77, 566/78, 566/79, 566/80, 566/81, 566/82, 566/83, 566/84, 566/85, 566/86, 566/87, 566/88, 566/89, 566/90, 566/91, 566/92, 566/93, 566/94, 566/95, 566/96, 566/97, 566/98, 566/99, 566/100, 566/101, 566/102, 566/103, 566/104, 566/105, 566/106, 266/1, 266/2, 266/3, 266/4, 266/5, 266/6, 266/7, 266/8, 266/9, 266/10, 266/11, 266/12, 266/13, 266/14, 266/15, 266/16, 266/17, 266/18, 266/19, 266/20, 266/21, 266/22, 266/23, 266/24, 266/25.
- Areas:** plocha chodníku 1020 m<sup>2</sup>, plocha chodníku 570 m<sup>2</sup>, plocha chodníku 676 m<sup>2</sup>, plocha chodníku 509 m<sup>2</sup>, plocha chodníku 612 m<sup>2</sup>, plocha chodníku 517 m<sup>2</sup>, plocha trávniku 3950 m<sup>2</sup>, plocha trávniku 515 m<sup>2</sup>.
- Scale:** 0 to 20 meters.